



**ISD**

INTERNATIONAL  
SCHOOL DHAKA

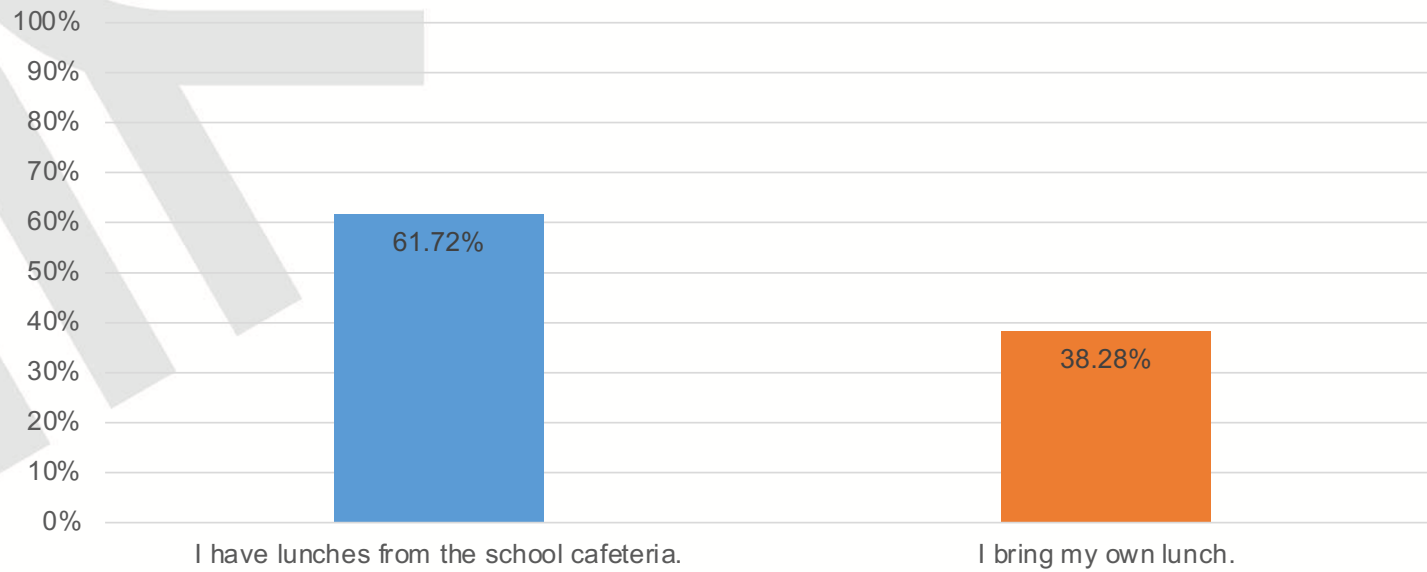
# ISD School Lunch Survey

Participants: 128

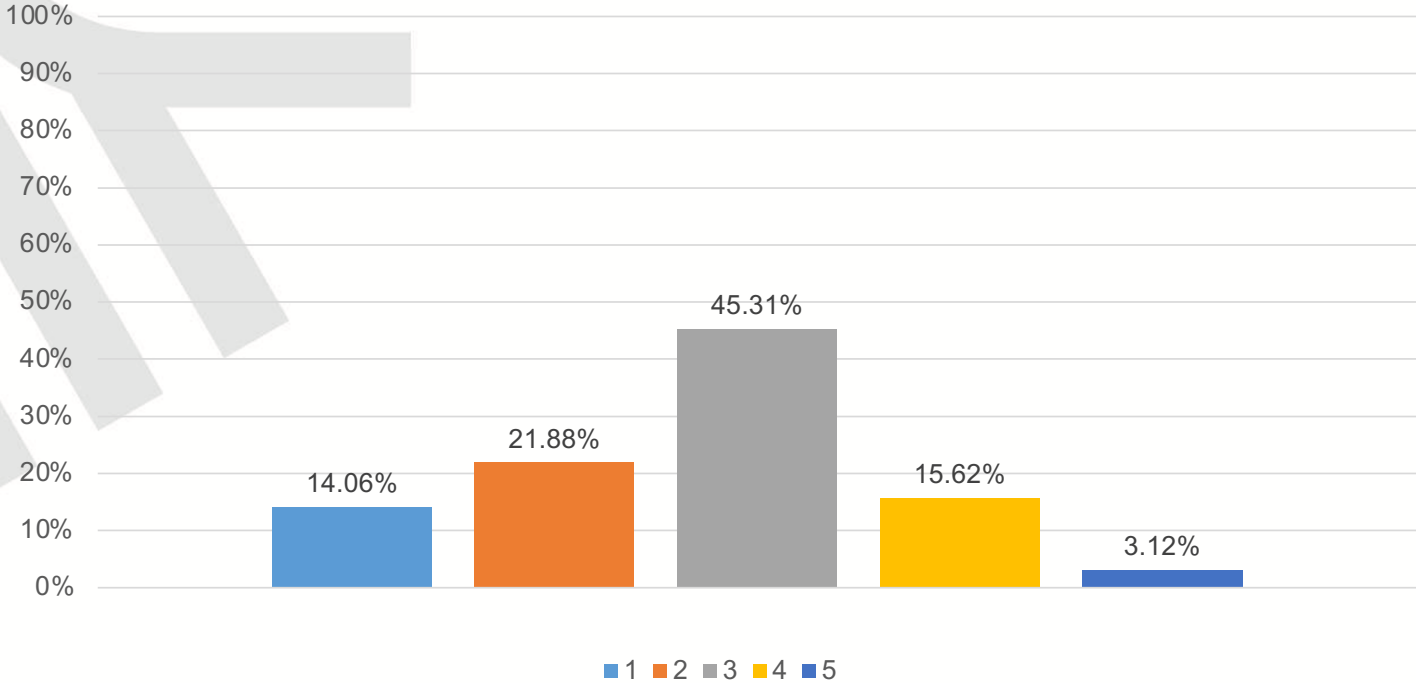


Empower. Inspire. Embrace.

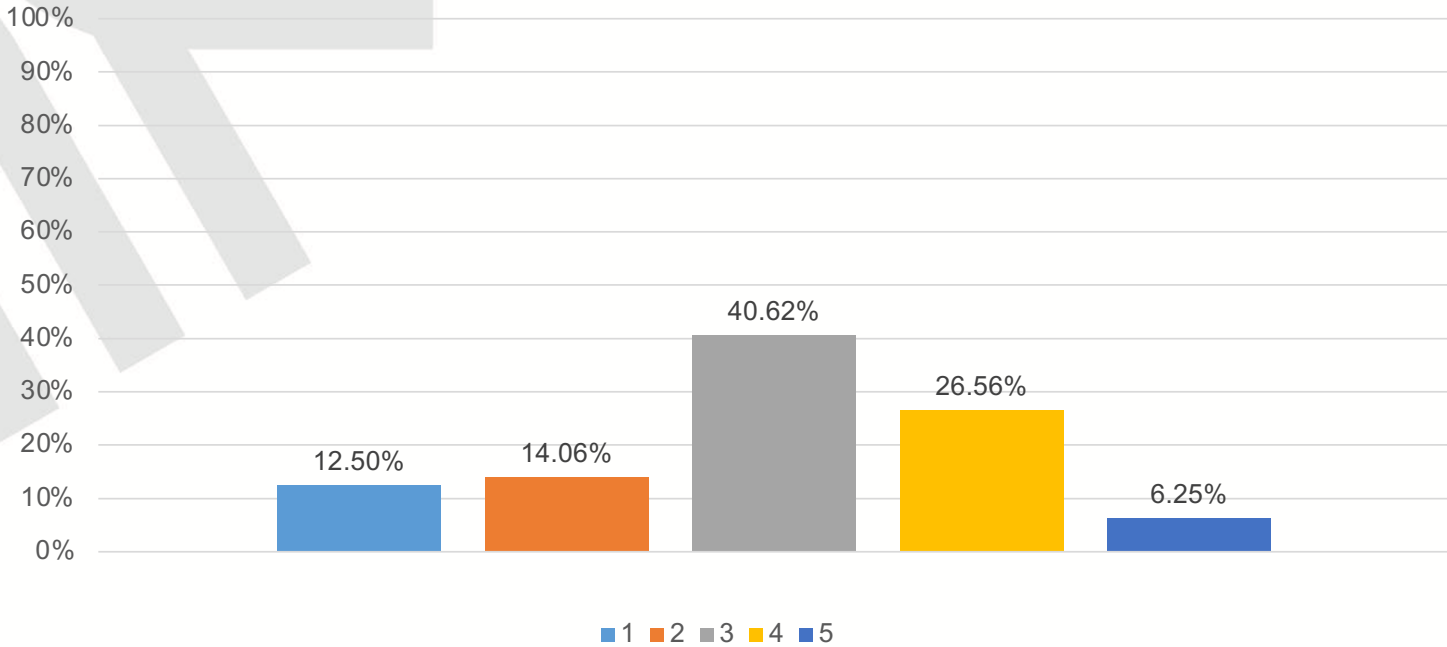
## Q1: What are your lunch arrangements at ISD?



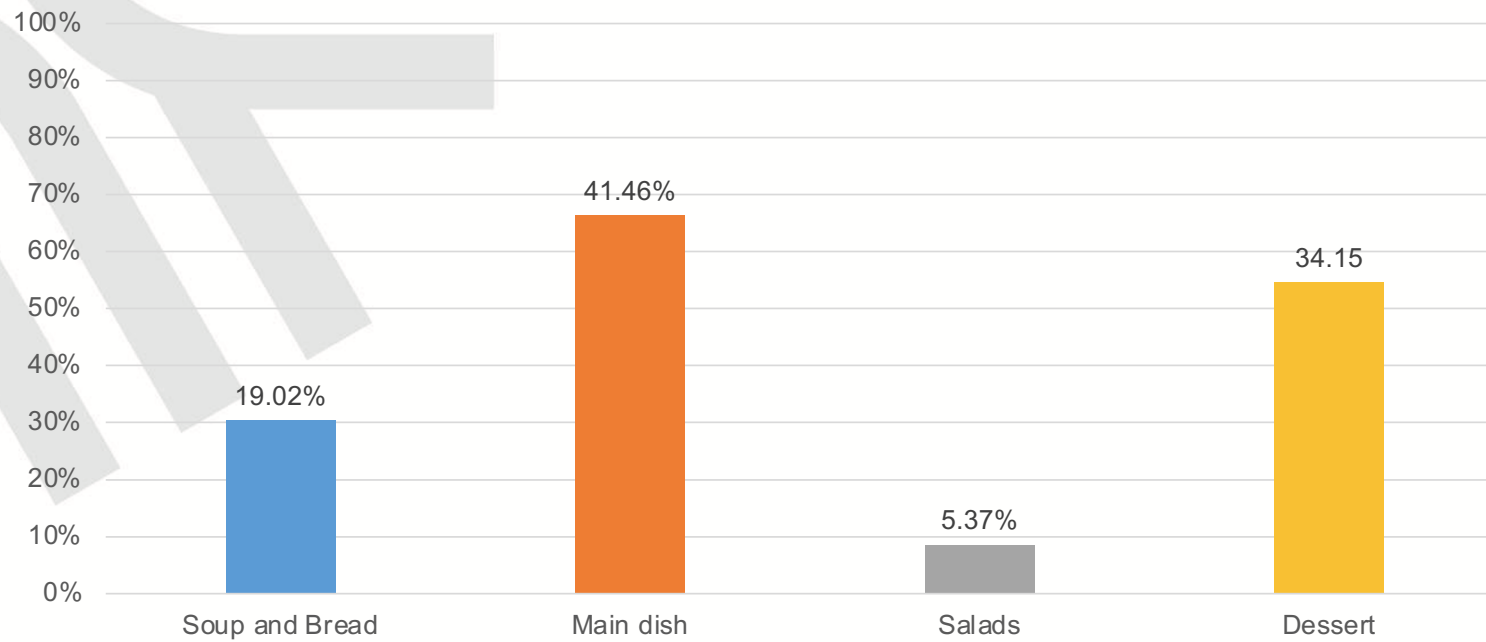
## Q2: Please rate how tasty the cafeteria food is between 1 to 5 Star



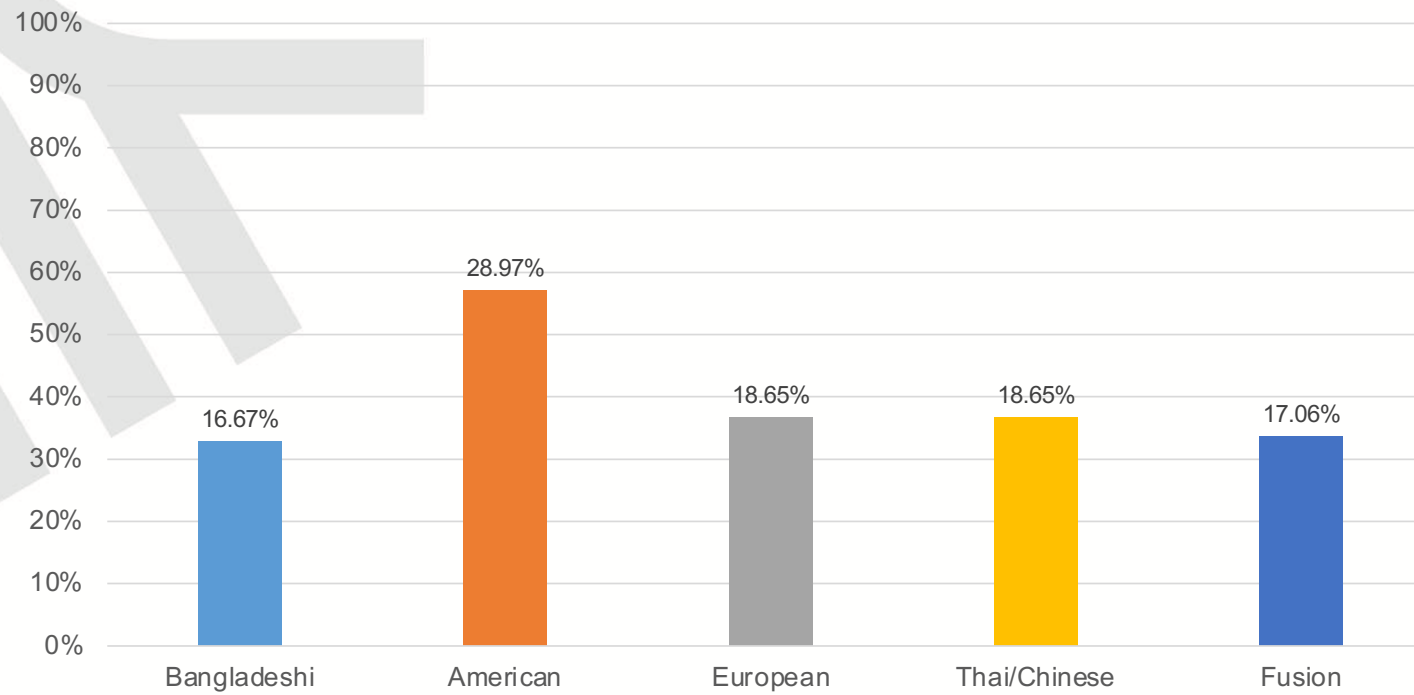
### Q3: Please rate how healthy you think the cafeteria food is between 1 to 5 Star



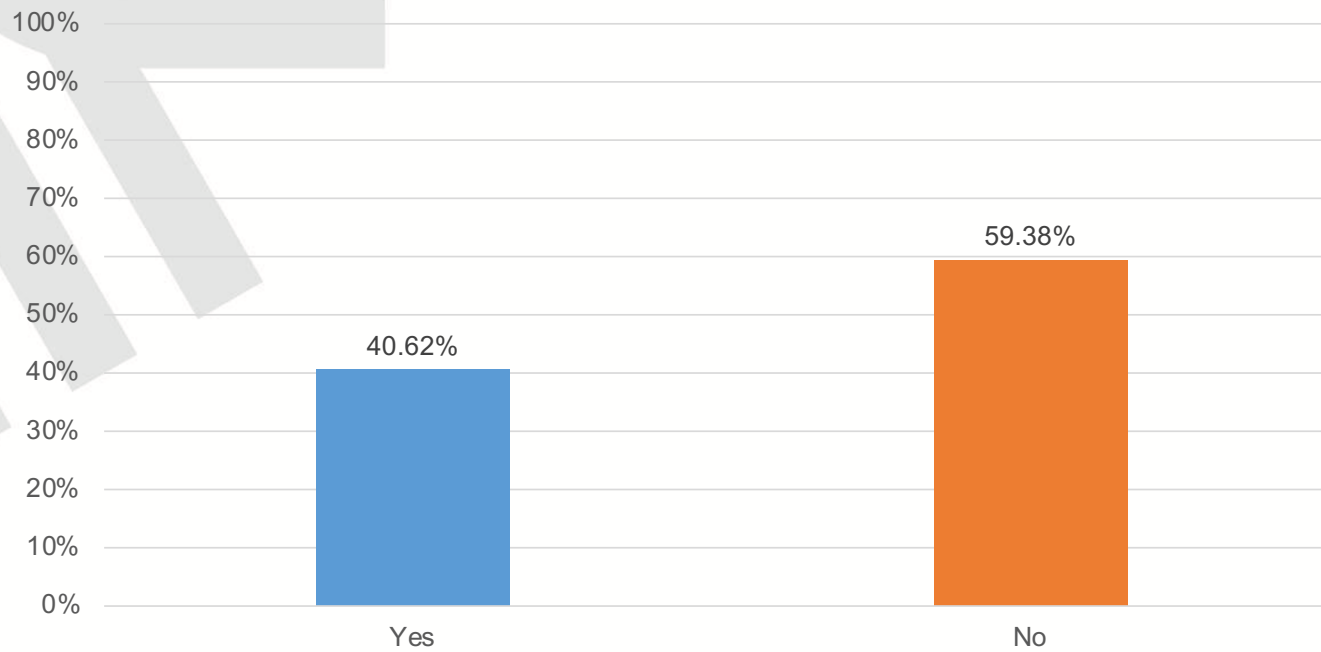
## Q4: Which of the following do you like to eat in the cafeteria?



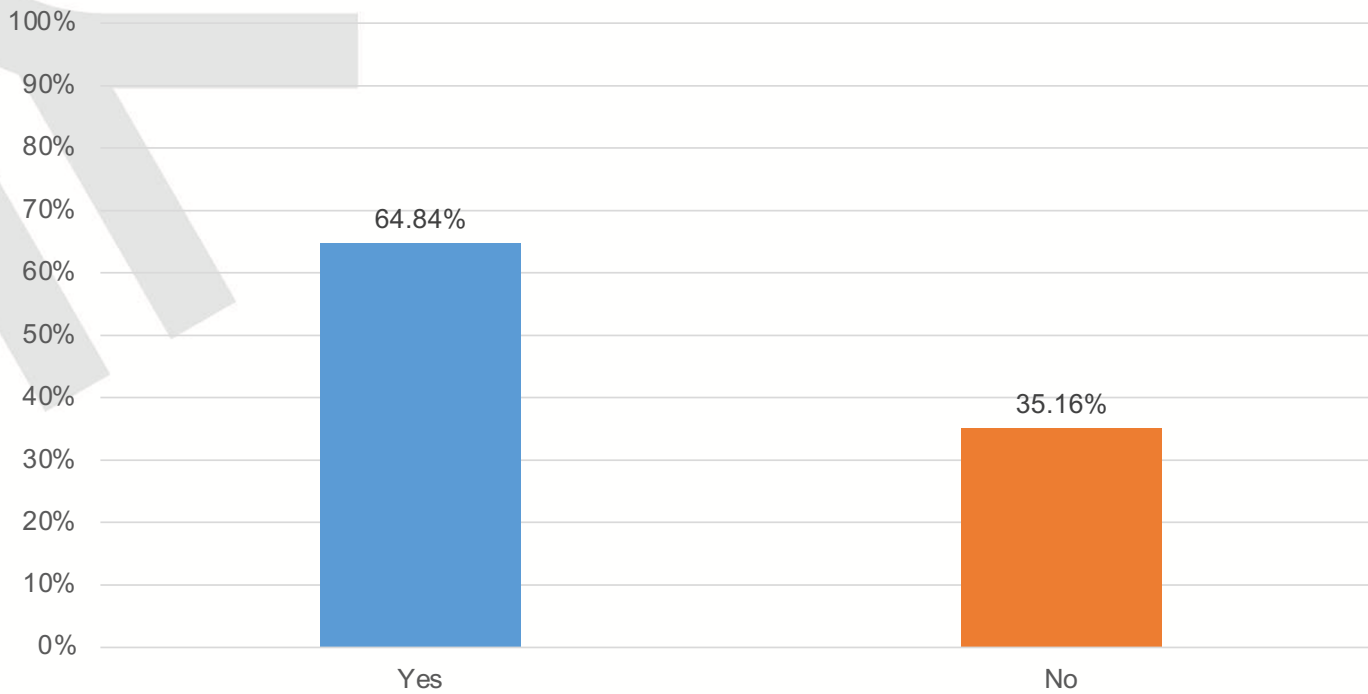
## Q6: Which cuisine would you like to eat more in the cafeteria?



## Q7: Do you have enough time to eat your lunch in school?



**Q9: Have you noticed any positive changes in the cafeteria menu since the beginning of this school year?**





THANK YOU

